

# SecureFile



Advanced Encryption & Digital Signing  
For Mission-Critical Files

# What is SecureFile?

SecureFile is a comprehensive document security solution that secures mission critical files through powerful encryption using the 256-bit AES (Advanced Encryption Standard) algorithm and persistent digital signatures.



## Confidentiality

Keep mission critical files secure in any location and inaccessible to unauthorized parties



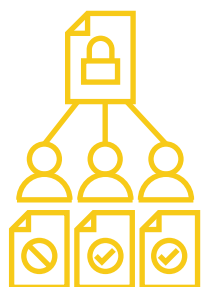
## Integrity

Ensure mission critical files are sent as intended and free from unauthorized modification



## Authentication

Be assured of the identity of the source of the file with non-repudiable digital signing



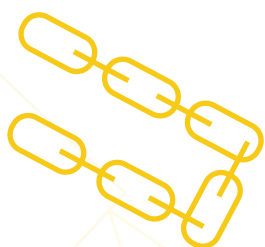
## Encryption with Sharing in Mind

Designed to protect files from unauthorized use through powerful encryption in just a few clicks, SecureFile also makes possible the sharing of files among multiple authorized users, both internal and external, through standard PKI technology.



## Storage Security with Self-Encrypt & WipeFile

For easily storing mission critical files without leaving any plain data residue, SecureFile allows users to self-encrypt files while permanently erasing all traces of the original ones. Once wiped, those plain files are beyond recovery, even with the use of sophisticated file restoration techniques.

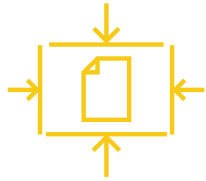


## Non-Repudiation with Chain Signing

Digital signatures in SecureFile not only maintain data integrity and allow for reliable authentication, but also provide non-repudiation. It goes even further by allowing multiple authorized users sign a file with chain signing. This offers an essential component for secure approval process workflows within organizations.

# Get Any File Encrypted in Just a Few Clicks

SecureFile is intuitively integrated to allow users to encrypt any file, anywhere on your system in as few as two clicks\* while also reaping the following benefits in the process:



File Compression



Air-Tight Encryption & Signing



Sharing or Wiping of Plain File

\* Additional clicks required to select authorized users for sharing use-cases.

## Develop Custom Secure Applications With Built-In File Encryption & Signing

The SecureAge COM (Component Object Model) API is a set of application programming interfaces that allow developers to access the SecureAge platform and add PKI-based security functionality within their own applications.



### How Does It Work?

It is based on Windows COM interface to allow development through any programming language (i.e. Visual Basic or C++) that can interface with it.

This lets developers easily implement the file encryption and digital signing security features of SecureFile on other enterprise applications with very little development time and effort.

### How are User Keys & Certificates Managed?

User keys and certificates are managed within the certificate store of the main SecureAge client software.

Developers can create an application that calls the API to perform an LDAP search for a user's certificate, to download the required certificate not found in the certificate store, and to validate it.

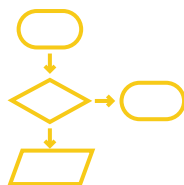


# Key SecureFile Features

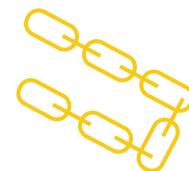
SecureFile is packed with features to safely secure your files from any unauthorized access without compromising usability.



**Public & Private Key Encryption/  
Decryption**  
Supports 256-bit AES file encryption  
algorithms with unlimited key-length  
RSA digital signature



**Customizable Algorithms**  
Allows integration of user-defined file  
encryption algorithms to further boost  
data security



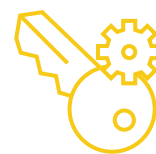
**Chain Signing Support**  
Provides chain-signing for secure  
document workflow control in  
organizations



**WipeFile**  
Ensures confidential files in plain are  
permanently erased and  
unrecoverable once encrypted



**Certificate Management**  
Supports Standard X509 certificates  
and local caching of peer certificates  
for enhanced performance



**Key Management**  
Support for standard file encryption  
algorithms such as AES, triple-DES,  
RSA, ECDSA, ECDH, MD5, SHA-1, &  
SHA-2



**Two-Factor Authentication**  
Seamless integration with PKI smart  
cards and USB tokens



**SecureAge COM API**  
Scalable API for building secure  
applications with encryption and  
signing

## Need More Information?



[www.SecureAge.com](http://www.SecureAge.com)



[contactus@secureage.com](mailto:contactus@secureage.com)